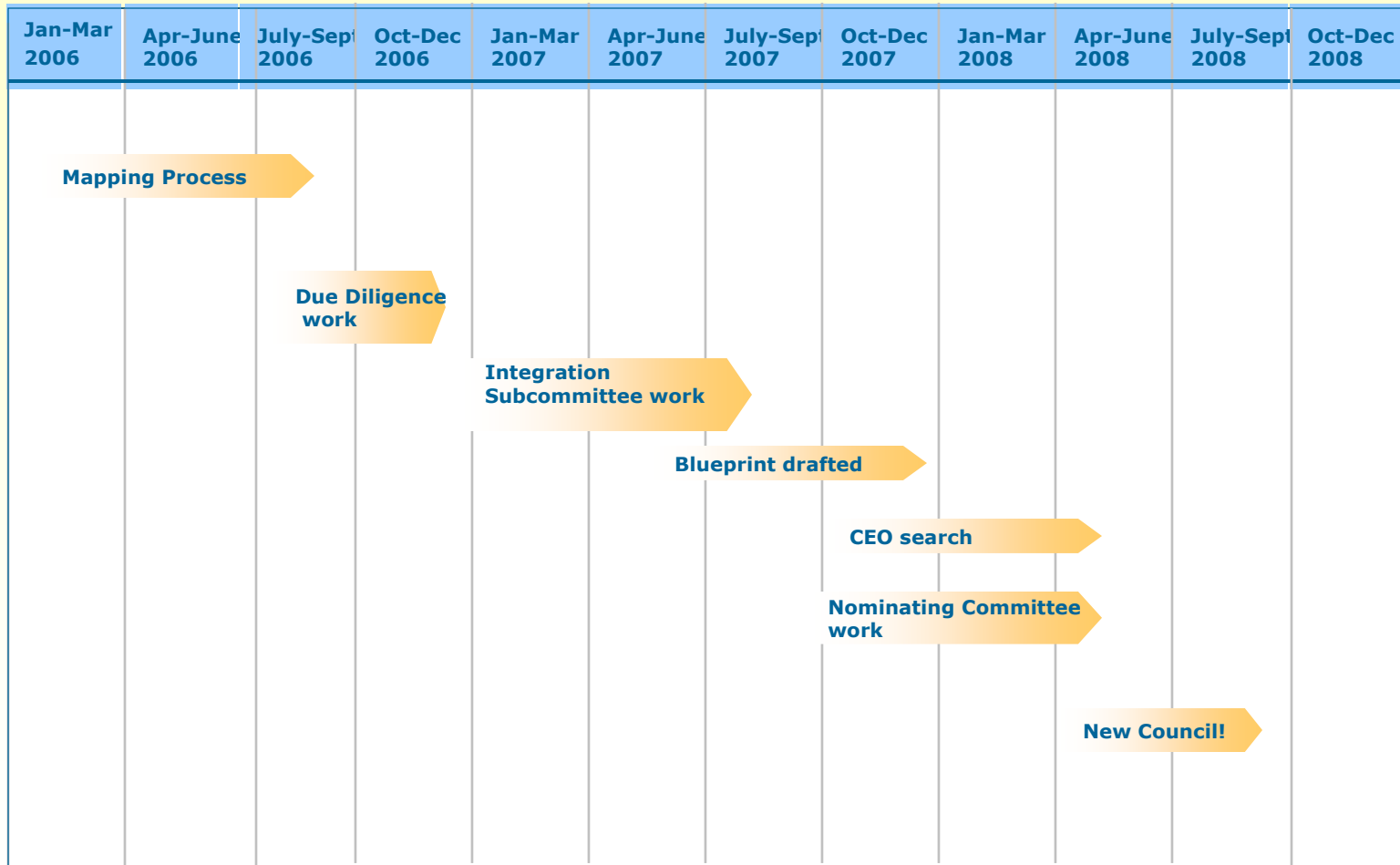


Council Realignment Timeline



Movement Falls Short of Our Desired Future State

Current Realities:

- Between 33% & 50% of all Girl Scout councils cannot meet current criteria and standards
 - Hold qualified charters
 - Less than 3 months reserve
 - Two or more consecutive years of deficit
 - Less than 6% membership share
- The largest 20% of councils serve 50% of membership, the smallest 20% serve

Vision

Girl Scouting is the organization where, with the support of positive role models, girls develop leadership skills that enable them to:

- Develop healthy relationships
- Value diversity
- Build life skills
- Realize their full potential and
- Feel empowered to make a difference